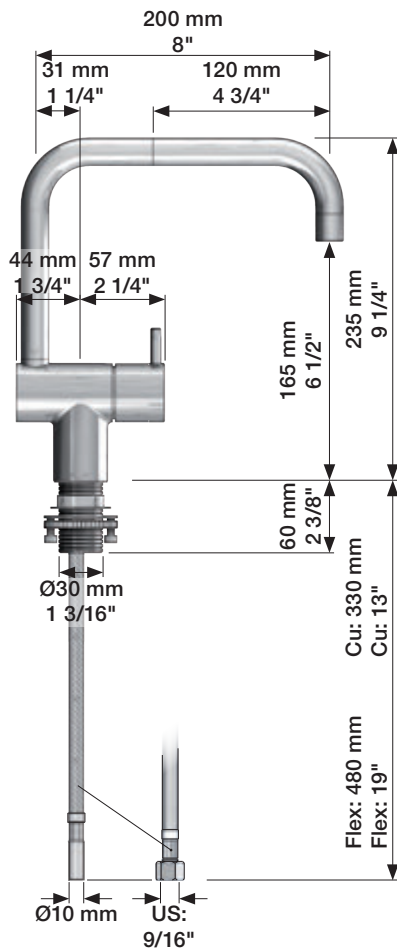
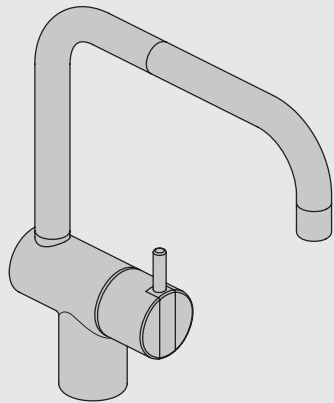


VOLA KV1


Fitting instruction
 Montageanleitung
 Monteringsvejledning
 Monteringsvægledning
 Montage hanleiding
 Manuel de montage

 **GODKENDT
 TIL DRILLEKAVAND**
 04/00019
 04/00021

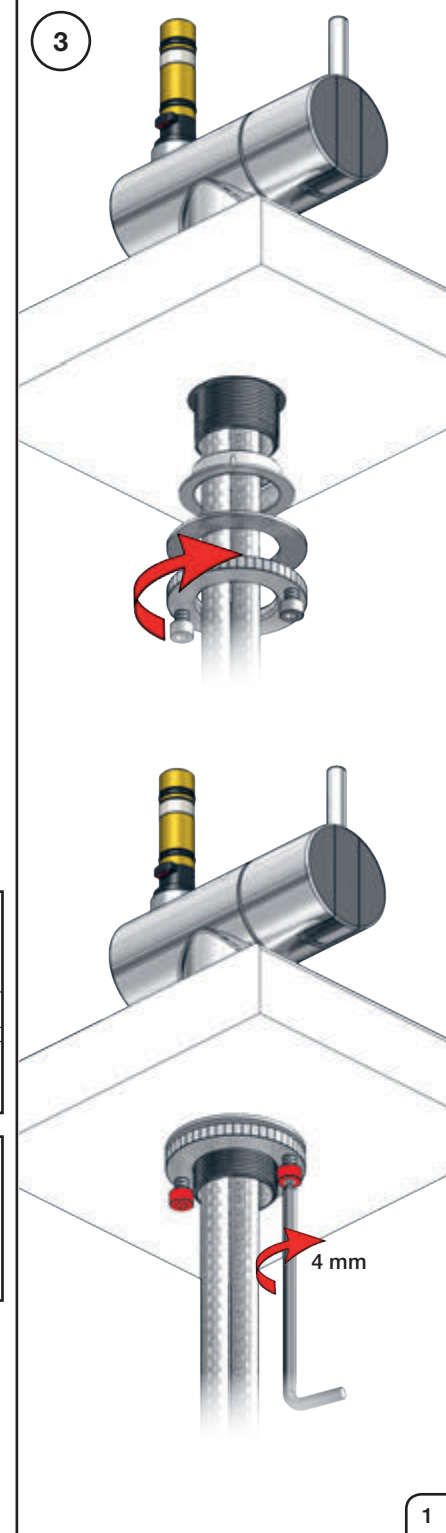
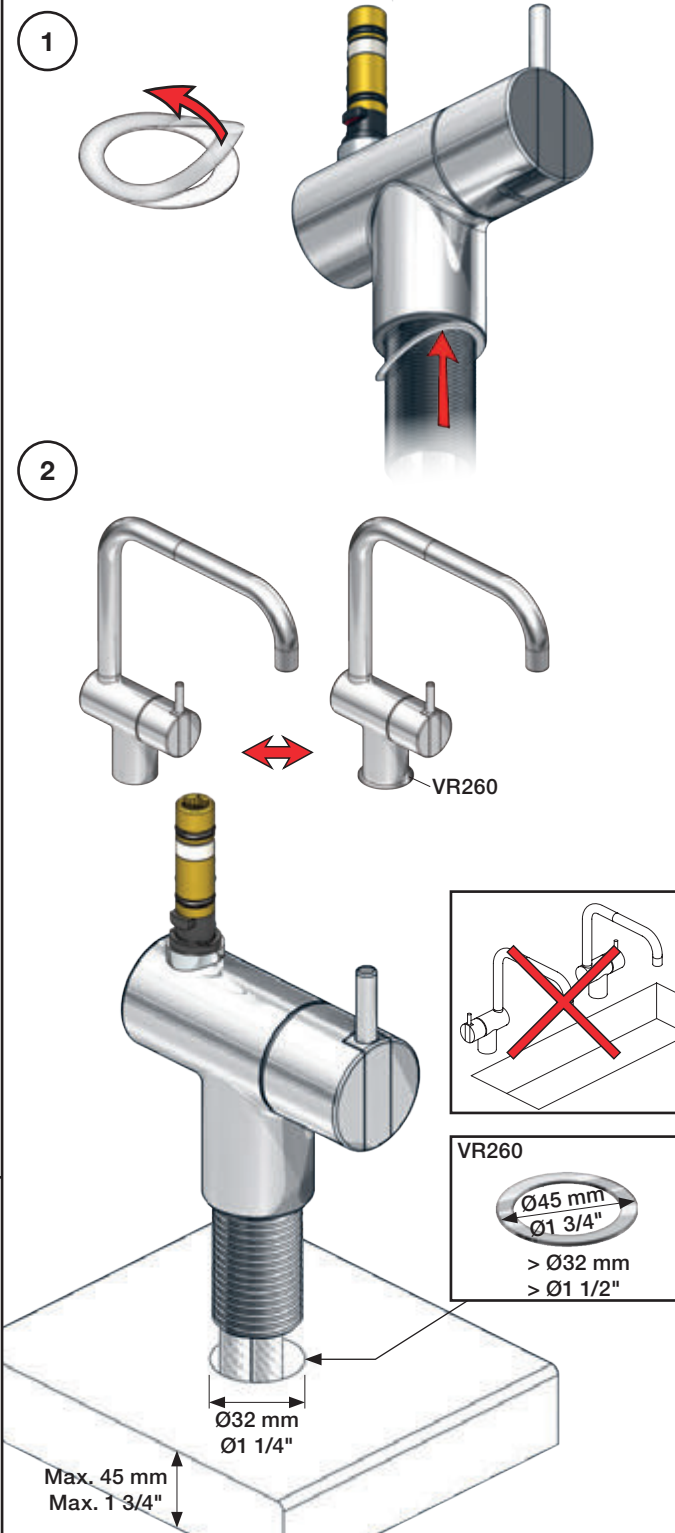
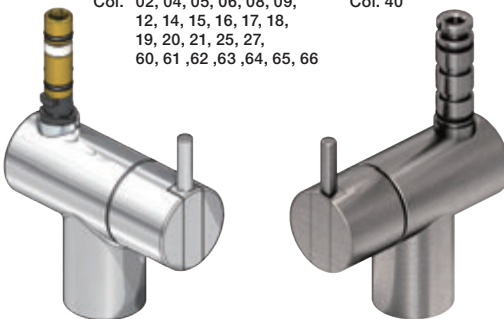


Data, 3 Bar /43.5 Psi:

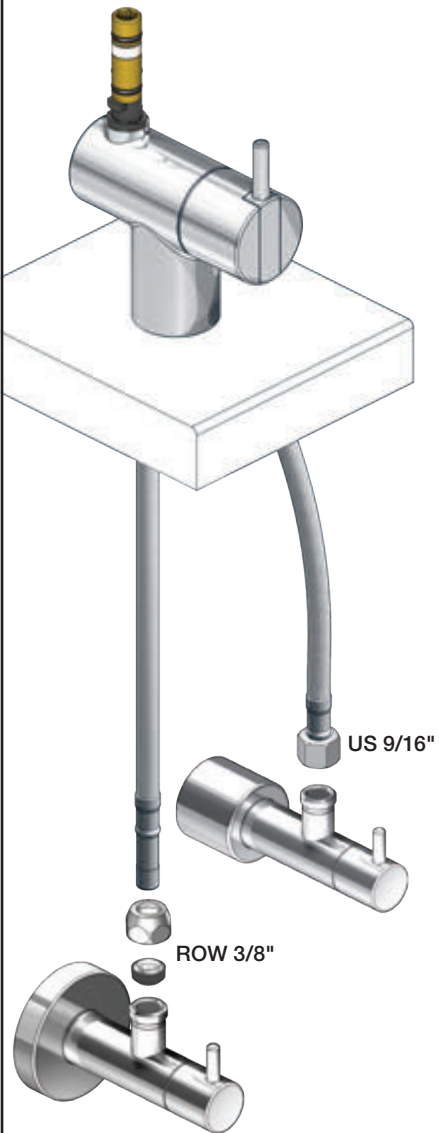
	l/min.	Gal/min.
KV1:	9,0	2.4
KV1US:	4,5	1.2

 Max. 65°C, 150°F

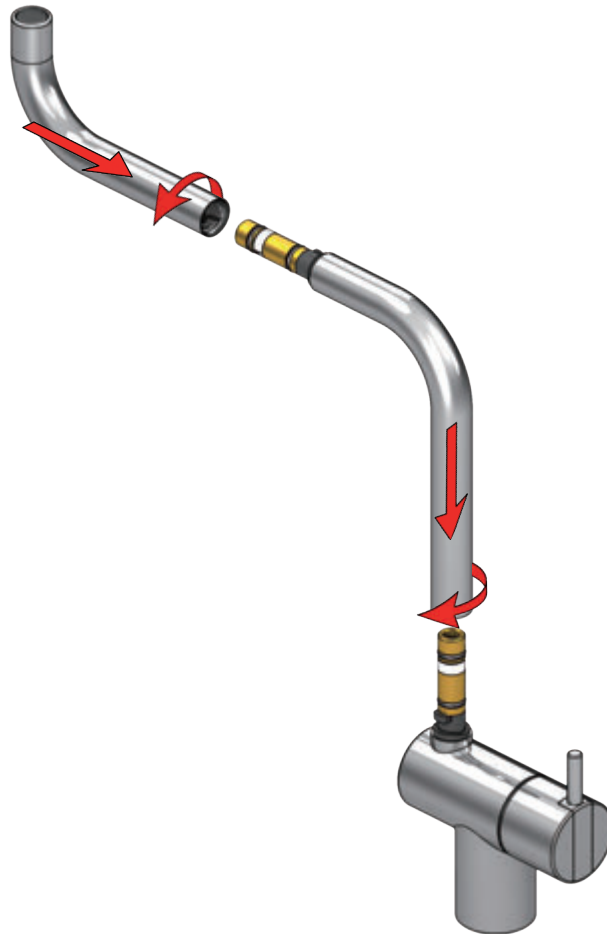
Col. 02, 04, 05, 06, 08, 09, Col. 40
 12, 14, 15, 16, 17, 18,
 19, 20, 21, 25, 27,
 60, 61, 62, 63, 64, 65, 66



4

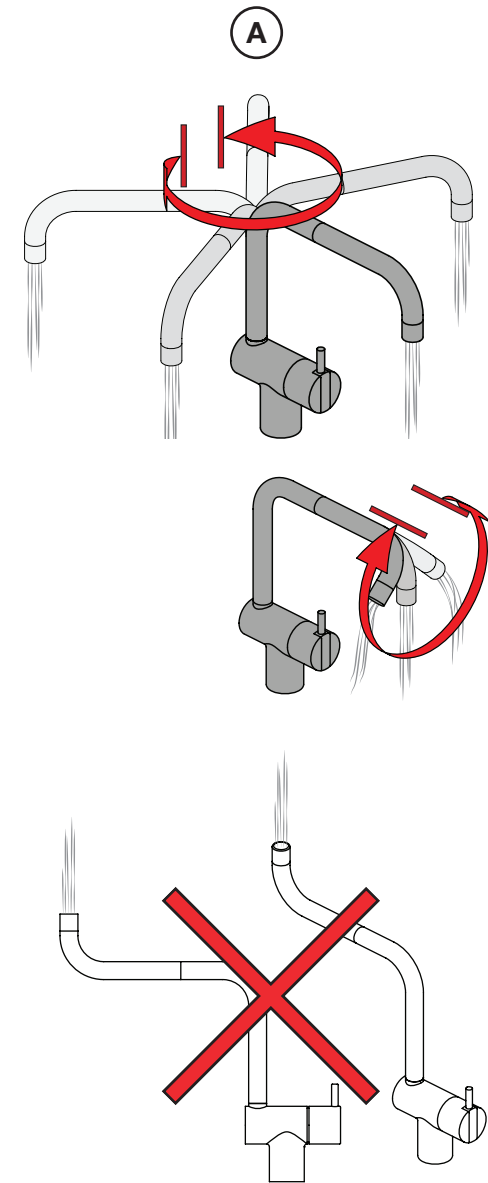


5

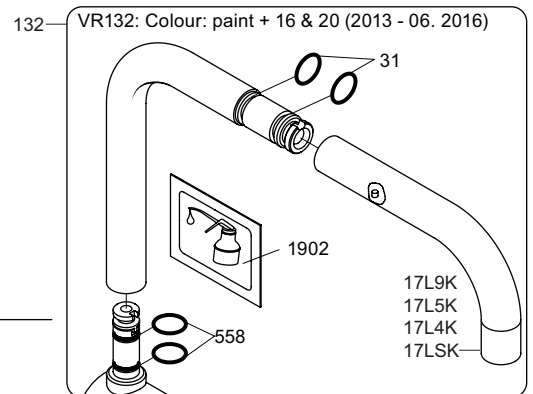
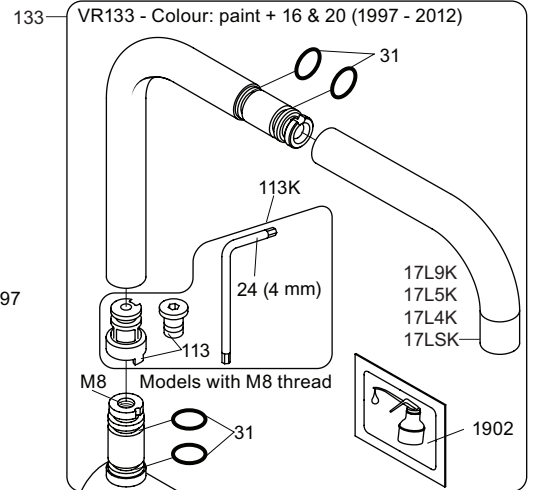
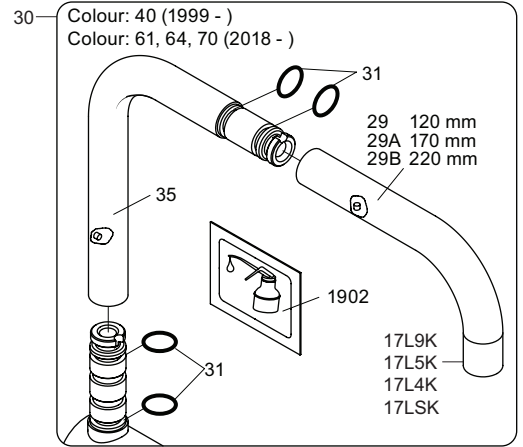
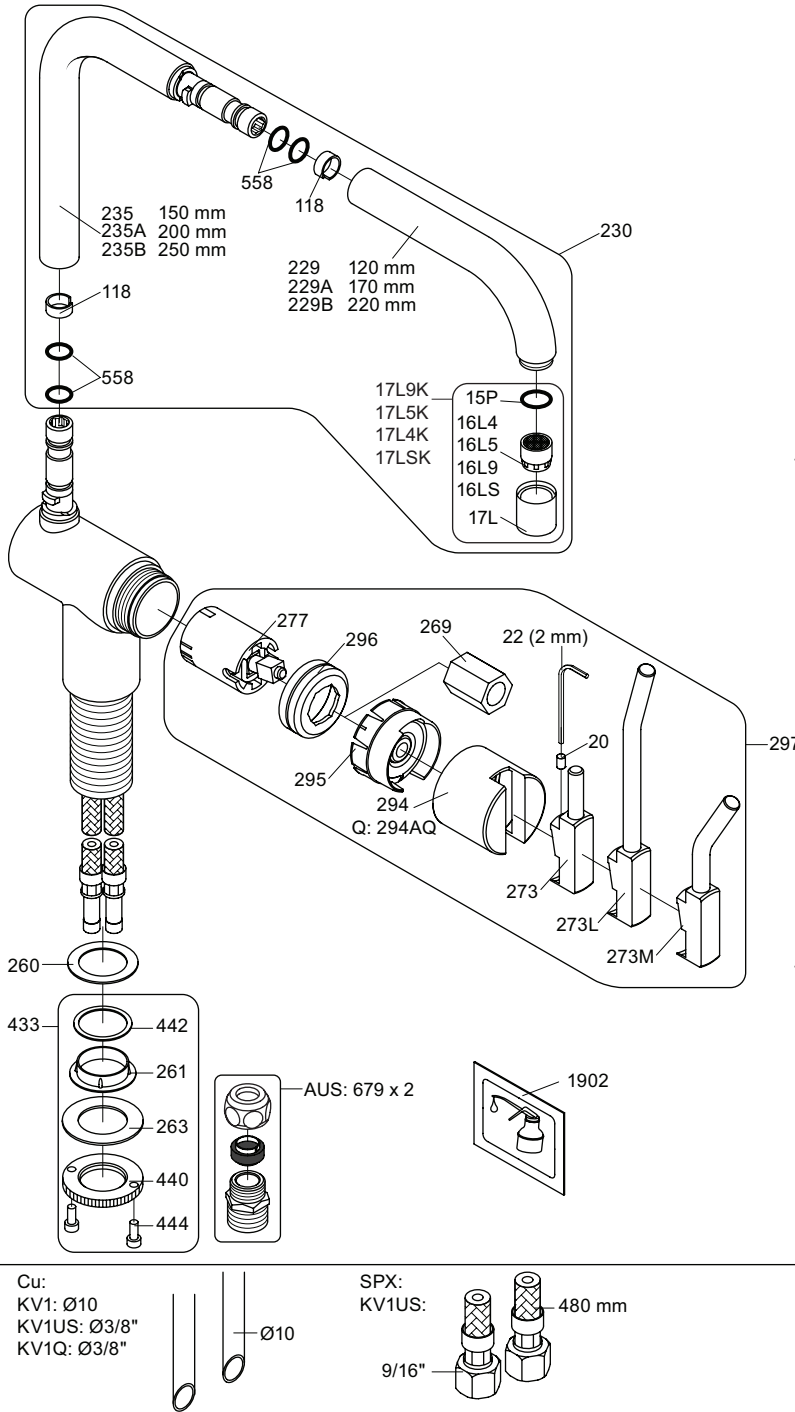
Col. 02, 04, 05, 06, 08, 09, 12, 14, 15, 16, 17, 18,
19, 20, 21, 25, 27, 60, 61, 62, 63, 64, 65, 66

5a

Col. 40

Operation
Bedienung
BetjeningBruk
Bediening
Fonctionnement

Colour: paint + 16, 19, 20



- NR.10/L/M: VR20, VR22, VR273/L/M, VR294, VR295
 VR17L4K: VR15P, VR16L4, VR17L (US Standard)
 VR17L5K: VR15P, VR16L5, VR17L
 VR17L9K: VR15P, VR16L9, VR17L
 VR17LSK: VR15P, VR16LS, VR17L
 VR30: VR15P, VR16L9, VR17L, VR29, 4xVR31, VR35, VR1902 (F40) (and KV1 from 1972 - 1996)
 VR132: VR15P, VR16L9, VR17L, 2xVR31, 2xVR558, VR1902 (2013 - 06. 2016)
 VR133: VR15P, VR16L9, VR17L, VR24, 4xVR31, VR113, VR1902 (1997 - 2012)
 VR230: VR15P, VR16L9, VR17L, 2xVR118, VR229, VR235, 4xVR558, VR1902 (06-2016 -)
 VR277K: VR22, VR269, VR277
 VR297/L/M: VR20, VR22, VR269, VR273/L/M, VR277, VR294, VR295, VR296
 VR433: VR261, VR263, VR440, VR442, 2xVR444



vola

Lunavej 2
 DK-8700 Horsens
 Tlf : + 45 7023 5500
 sales@vola.com
 www.vola.com

VOLA KV1

Date
 Jan. 17

Rev.
 8

Sheet
 SB25.2